

# iCryl MPD™ MINI Topical Skin Adhesive

MULTIPURPOSE MEDICAL DEVICE



## Sterilize

Clean and disinfect the wound site with disinfectant

## Seal

Close the wound with cyanoacrylate having anti-bacterial barrier property

## Secure

Enhance the seal with surgical holding tape

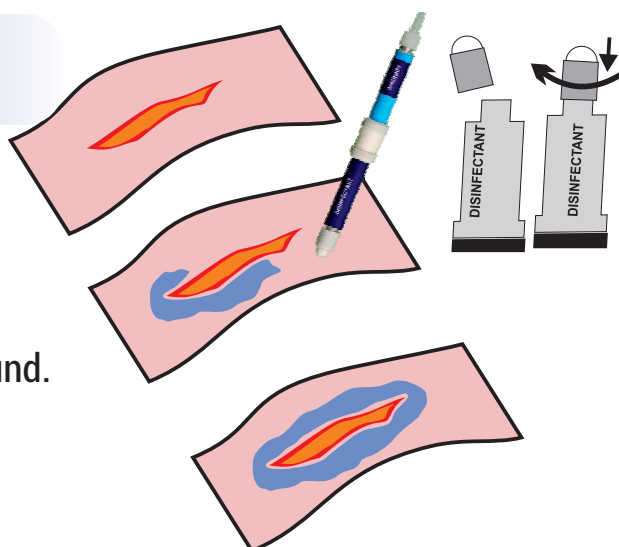
**Patented ALL-IN-ONE  
Wound Closure Device**

## Sterilize

Tighten the cap to pierce the disinfectant tube.

Invert the device and use it as a swab to wipe the area around the wound.

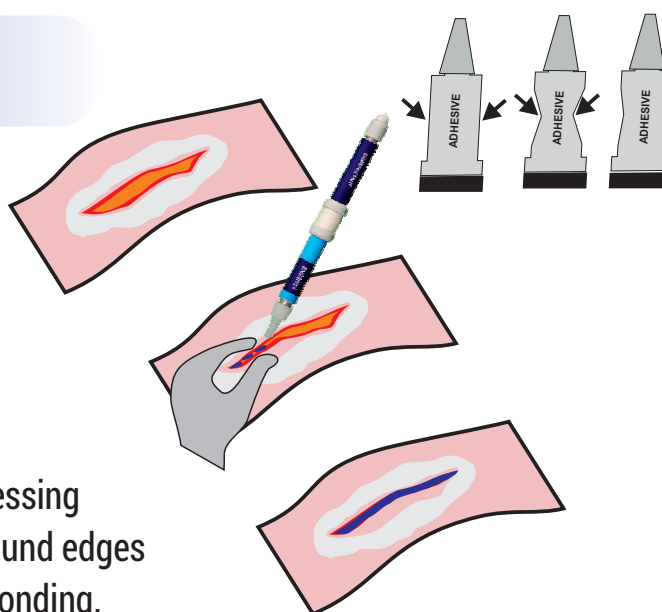
Wait for two to three minutes for the alcohol to dry off.



## Seal

Press firmly with forefinger and thumb in the middle of adhesive tube to crush the ampoule inside which releases the adhesive.

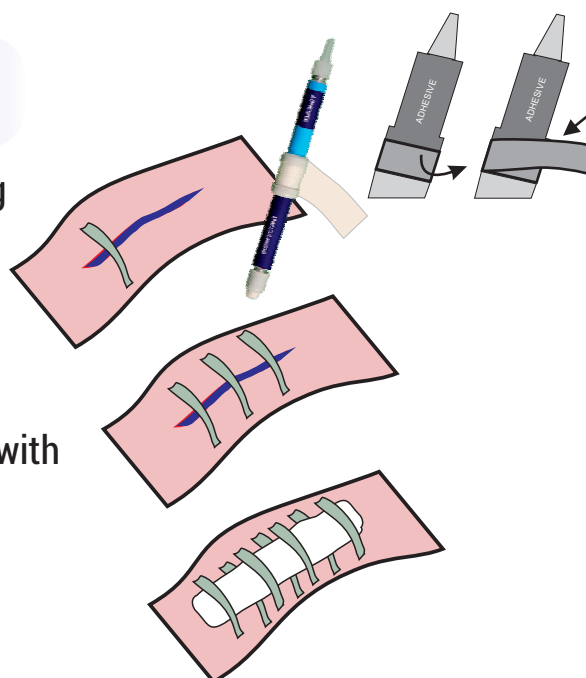
Closely approximate the wound edges and apply the adhesive drop wise by pressing gently on the tube. Keep holding the wound edges together for a minute to complete the bonding.



## Secure

Roll out small lengths of surgical holding tape out of the middle of the device and apply over the sealed wound.

A small bandage can be applied over the sealed wound which is also secured with surgical holding tape.



# *Application Areas*



First Aid Kits  
Emergency Response Boxes  
Ambulances  
Buses, Trains  
Public transport systems

Cuts  
Wounds  
Incisions  
Ports  
Perforations  
Grafts



Armed Forces  
Police  
Field Workers

Laparoscopy  
Dental Surgery  
Corneal Perforations  
Appendicitis  
Tendon Repair  
Skin Grafts  
Episiotomy



**DEVICE DESCRIPTION**

ICRYL MINI is a patented multipurpose medical device containing topical skin adhesive: n-butyl-2-cyanoacrylate, a disinfectant: 70% isopropyl alcohol pre-wetted swab, and a surgical adhesive tape roll.

**INDICATIONS**

ICRYL MINI is indicated for the closure of topical skin cuts, wounds and incisions including laparoscopic incisions, which have easily approximated edges with minimal tension and are thoroughly cleansed and without any evidence of infection.

**CONTRA-INDICATIONS**

ICRYL MINI should not be used internally (under the tissue or skin) as it may lead to foreign body reaction as the product is not absorbed in the tissues.  
Should not be used or applied on any internal organs or vascular bodies or brain tissue.  
ICRYL MINI is not be used to close any wounds or cuts that show infection.  
Not to be used on patients that are allergic or hypersensitive to tissue adhesives and any products containing cyanoacrylate products and formaldehyde.  
Not be used in patients that have conditions that are known to interfere in healing process.  
Not be used on cuts and wounds where extreme skin tensions occur like elbows and knees.

**WARNINGS**

ICRYL MINI is not an injection and is not to be used for intravenous or intra-muscular purposes.  
Only to be applied on thoroughly cleansed wounds that do not show evidence of infection.  
Use sparingly as excess application it may lead to tissue damage due to heat of polymerization.  
Do not introduce ICRYL MINI into the wound as solidified product hinders wound healing.  
ICRYL MINI is a single use device and should be used immediately after opening the package.

**PRECAUTIONS**

As ICRYL MINI bonds to many surfaces, care should be taken so that gloves, surgical instruments does not come into contact during applications  
Spilt product can be flushed with water which solidifies the product.  
Care should be taken not to introduce the product into the eyes as it can bond the eye lids.  
In case of accidental bonding, do not pull apart the bonded edges. Use copious amount of water to flush out the product. If bonding already occurred, use petroleum products like acetone or dimethyl formamide or 'nail polish remover' wetted cotton balls to slowly dissolve the product.

**ICRYL MINI MEDICAL DEVICE USAGE PROCEDURE**

**STERILIZE**

Tightly screw in the SWAB TIP on to the disinfectant tube.  
Invert the device and use the device and gently press on the tube to express the disinfectant out and use the device as a swab to wipe around the wound. Wait for three minutes for disinfectant to dry off.

**SEAL**

Firmly press the adhesive tube in the middle to crush the ampoule inside and release the glue into the tube.  
Bring the nozzle near the wound edges. Approximate the wound edges with forceps. Express the glue out of the tube by gently pressing on the tube in the middle and apply the drops all along the length of the wound edge. Wait for a minute for polymerization of the adhesive is complete.

**SECURE**

Peel of the holding tape from the middle of the device and apply strips of tape across the wound length to secure the closure.

REFER TO SCHEMATIC DRAWINGS ON THE BACK OF THE INSERT FOR USING THE DEVICE.

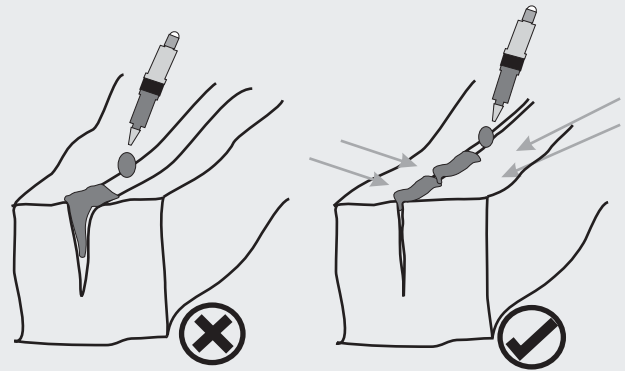
**WARNING**

**NOT AN INJECTION - NOT FOR INTRAVENOUS USE - TOPICAL USE ONLY**  
**TO BE USED BY DOCTOR, SURGEON OR A REGISTERED MEDICAL PRACTITIONER**  
**KEEP AWAY FROM EYES**  
**IN CASE OF ACCIDENTAL ADHESION, DO NOT PULL APART THE SEALED EDGES**  
**USE ACETONE OR NAIL POLISH REMOVER TO DISSOLVE THE SOLIDIFIED PRODUCT**

**APPLICATION OF ADHESIVE**

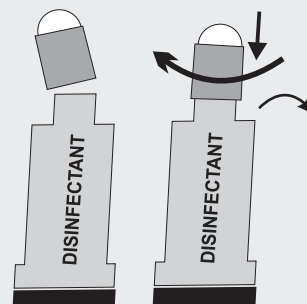
**DO NOT INTRODUCE GLUE INTO THE WOUND**

**USE GLOVED FINGERS TO PUSH WOUND EDGES TOGETHER AND APPLY GLUE AS DROPS OVER THE SURFACE**

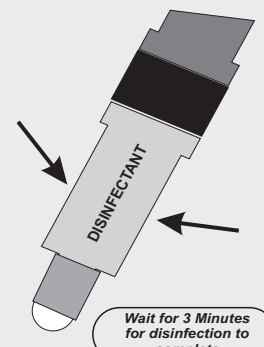


**ICRYL MINI DEVICE USAGE STEPS**

**1 STERILIZE**



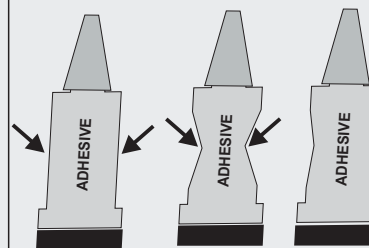
Screw in the swab tip to pierce the disinfectant tube.  
Invert the device and squeeze the tube to express the disinfectant



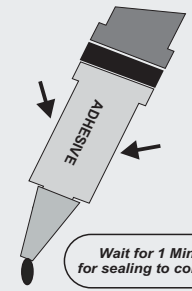
Wait for 3 Minutes for disinfection to complete

Invert the device and use it as a swab to wipe around the wound site to disinfect and sterilize the application area.

**2 SEAL**



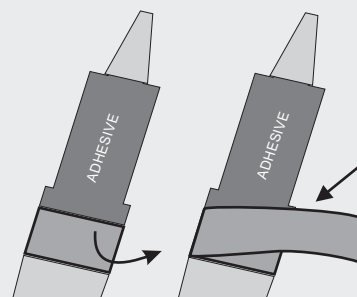
Press firmly on the adhesive tube with forefinger and thumb to release the adhesive inside the tube.



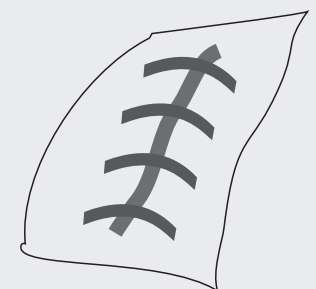
Wait for 1 Minute for sealing to complete

Bring the nozzle near the wound edges. Approximate the edges and express the glue from the device by pressing over the tube. Apply adhesive along the wound length.

**3 SECURE**



Peel the holding tape from the middle of the device.



Secure the sealed wound with strips of holding tape.